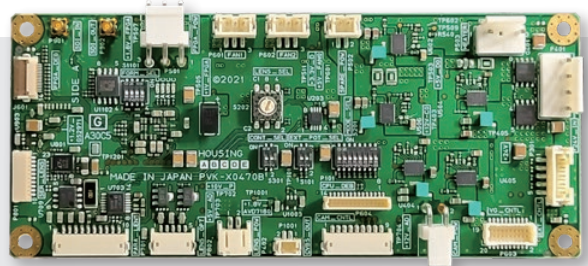


BOARD-H3005G

- Simplifying the control system
The KOKUSAI DENKI "BOARD-H3005G" simplifies the control system by using a single serial data connection.
- Enhanced functionality and operability
 - Provides Auto Focus capability to non-Auto Focus lenses.
 - Provides control to analog lenses via RS-232C/RS-485.
 - Provides control of the optional VG-2000PCB Heat Haze correction and Stabilization Board.

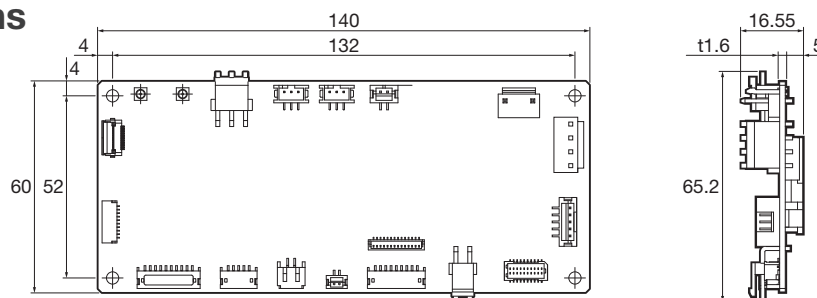


The BOARD-H3005G has video input/output (SDI, VBS) and lens control (Zoom, Focus, AF, Filter) Functions.

Specifications

Item		Spec.
Connectable camera		KP-HD2005R-S5, KP-HD3005G (KOKUSAI DENKI)
Connectable lens		<ul style="list-style-type: none"> • D60x16.7SR4DE-V23 (FUJINON) • D60x16.7SR4FE-ZP3C (FUJINON) • FH32x15.6SR4A-CV1 (FUJINON) • MZ38X4179DPFIR-H (ADL) • MZ40X2751DPFIR-H (ADL) • Y36Z15RHADP8EH (VST) For compatibility with other lens models, please contact us.
Interface	Video Format (Input & Output)	3G-SDI: 1080 59.94p/50p, HD-SDI: 29.97p/25p, Analog VBS (PAL/NTSC)
	Lens Control Function	Zoom, Focus, Filter Switching (Clear, ND, Visible Cut *Depends on the type of lens used)
	Auto Focus Methods	Contrast Auto Focus
	External I/F	VG-2000PCB, Fans (x2): 6W each (12V/0.5A), Heater: 80W (24V/3.33A)
	Communication	RS-232C/RS-485 (9600/38400/115200bps)
	Lens Control Accuracy	12bit
	Manual focus control & position read	Control speed setting: 6 steps *Far to Near *Varies depending on the lens. Gradation: 16bit (0000 to FFFF)
	Manual Zoom control & position read	Control speed setting: 4 step*Tele to Wide *Varies depending on the lens. Gradation: 16bit (0000 to FFFF)
Operating temperature and humidity		-10 °C to 60 °C (20% to 80% RH) No condensation
Storage temperature and humidity		-20 °C to 60 °C (20% to 80% RH) No condensation
Power		DC24V Approx.10W (Only Housing PCB Unit)
Dimension		140±2.5 (W) x 60±1.5 (D) x 16.55±1.0 (H) mm
Weight		60±10g

External dimensions



These Specifications are subject to change without notice.

CAUTION : To ensure safe operation, please read the instruction manual before using this product.

KOKUSAI DENKI Electric Inc.

URL : <https://www.kokusaidenki.co.jp/global/en/index.html>
32, Miyuki-cho, kodaira-shi, Tokyo 187-8511, Japan
Phone : +81-42-322-3111, Fax : +81-42-322-3303

KOKUSAI DENKI Electric Asia Pte. Ltd.

URL : <https://www.kokusaidenki.com.sg>
9 Tampines Grande, Asia Green, #02-00,
Singapore 528 735
Phone : +65-6911-6794

KOKUSAI DENKI Electric America, Inc.

URL: <https://www.kokusaidenki.us>
Headquarters
104 Feeding Hills Road Southwick, MA 01077, U.S.A.
Toll Free : +1 (833) 227-1658,
Phone : +1 (669) 207-5038

West Office
11258 Monarch Street, Unit H
Garden Grove, CA 92841, U.S.A.

West Sales Phone : +1 (516) 682-4448
East Sales Phone : +1 (516) 682-4445
Midwest Sales Phone : +1 (516) 682-4450

KOKUSAI DENKI Electric Europe GmbH

URL : <https://www.kokusaidenki.eu>
Frankfurt Head Office
Siemensstr. 9, D-63263 Neu-Isenburg, Germany
Phone : +49 (0) 6102-8332-0, Fax : +49 (0) 6102-8332-499

London Office
Orion House, Bessemer Road, Welwyn Garden City, Herts,
AL7 1HH, UK
Phone : +44 (0) 7808 330195

KOKUSAI DENKI Electric Linear S/A

URL : <https://www.kokusaidenki.com.br>
Avenida Frederico de Paula Cunha, 1001 - Maristela
Santa Rita do Sapucaí - MG - Brasil - CEP: 37540-000
Phone : +55 (35) 3473-3473, Fax : +55 (35) 3473-3474